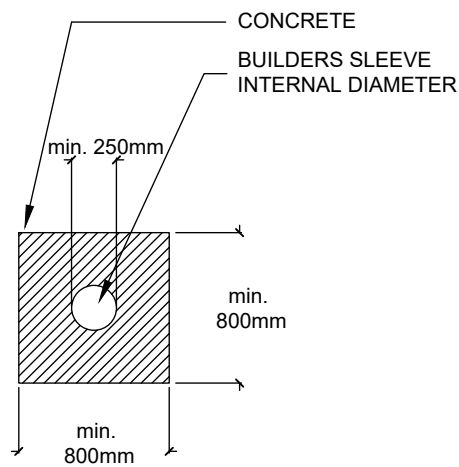
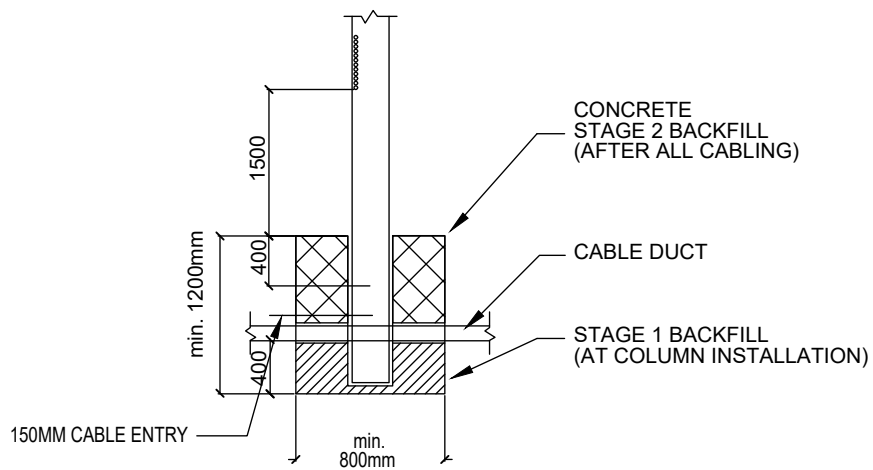


- LEGEND:
- 1 BOLLARD LUMINAIRE - FA170-AP06 BY EWO AS SUPPLIED BY GENERAL LIGHTING OR EQUIVALENT.
 - 2 COLUMN MOUNTED LED LUMINAIRE (31.3W LED TWILIGHT, BILB_EM49_X102 (BY GENERAL LIGHTING OR EQUIVALENT), 4 METRE COLUMN IS REQUIRED
 - EX EXISTING LIGHTING
 - SITE BOUNDARY
- NOTES:
- THE DESIGN IS BASED ON LUMEN OUTPUT AT 2000 HOURS, LUMEN OUTPUT PER LAMP MANUFACTURERS DATA, SPOT LAMP REPLACEMENT, NORMAL ENVIRONMENT, ANNUAL CLEANING.
 - COLUMN BASES SHALL BE AS AGREED AND CONFIRMED WITH THE COLUMN SUPPLIER, BUT WILL TYPICALLY BE IN-LINE WITH DETAILS 2.
 - THIS DRAWING TO BE READ IN CONJUNCTION WITH ALL MECHANICAL & ELECTRICAL DRAWINGS AND SPECIFICATION ISSUED BY EDP FOR THE PROJECT. 2. THIS DRAWING TO BE READ IN CONJUNCTION WITH ARCHITECTS LAYOUT DRAWINGS AND SPECIFICATION.
 - THIS DRAWING TO BE READ IN CONJUNCTION WITH ARCHITECTS LAYOUT DRAWINGS AND SPECIFICATION.

DETAIL 2: TYPICAL 4 METRE LIGHTING COLUMN BASE DETAIL:
EXACT DETAILS TO BE CONFIRMED WITH LIGHTING COLUMN SUPPLIER

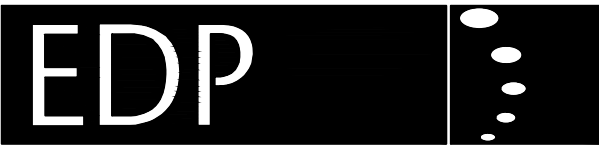


27.04.22	ISSUED FOR PLANNING	3
19.10.21	PRELIMINARY ISSUE	2
26.08.21	ISSUED FOR INFORMATION	1
DATE	REVISION	No.

PROJECT	BROOMHILL ROAD TALLAGHT CO. DUBLIN
---------	--

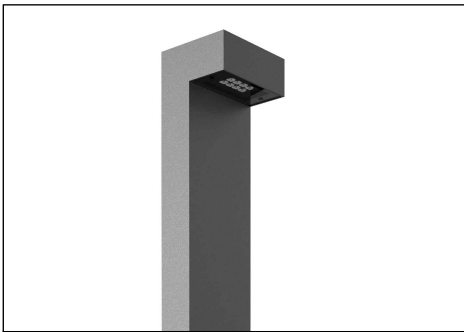
TITLE	EXTERNAL LIGHTING LAYOUT
-------	--------------------------

DRAWING No.			SCALE
1099 - S001			1:250 @ A1
DRN.	CKD.	APPD.	DATE
GQ	SOC	##	AUGUST 2021
FILE LOC:			



Environmental Design Partnership
mechanical & electrical consulting engineers

Block B1,
Centrepont Business Park
Oak Road, Dublin 12, Ireland.
Tel: +353-1-4092800
Fax: +353-1-4092858
email: admin@edp-engineers.com
web: edp-engineers.com



TYPE 1



TYPE 2